

# \$964,900 - 36 - 601 SHORELINE DRIVE

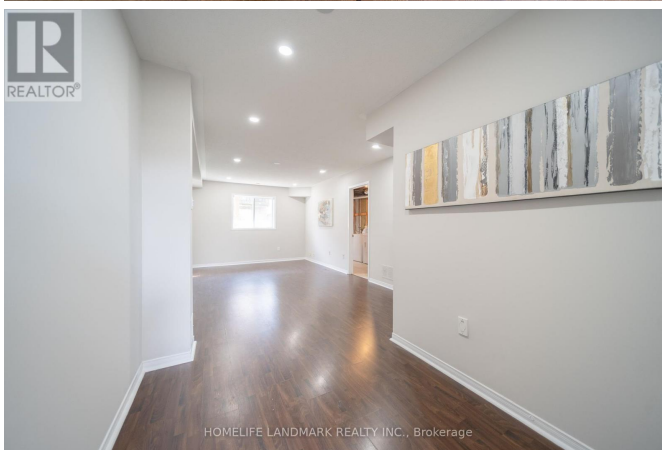
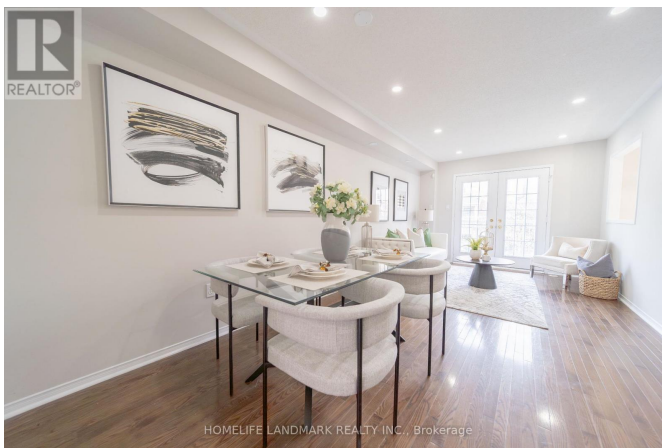
**Listing ID: W9234449**

**\$964,900**

3 Bedrooms, 3 Bathrooms Single Family

36 - 601 SHORELINE DRIVE,  
Mississauga, Ontario, L5B4K7

Prime Location ! Central Mississauga! Walk To Everything! High Park Village, Largest Unit In Complex! Over 1900 Sq Ft. Of Luxury! \$\$\$ upgrade! WalkOut To 2 Decks & Patio. Steps From Playground, Shopping, Public Transit. 15 Min Walk To Cooksville Go Stn. Pot Lights, Dark Hardwood Floors, Bright Eat-In Family Size, Gourmet Kitchen With Huge Pantry And Beautiful Granite Counters (id:54154)



MLS®, REALTOR®, and the associated logos are trademarks of The Canadian Real Estate Association

Data Provided by: Toronto Regional Real Estate Board

Last Modified: 05/08/2024 08:08:45 AM

Listing Office: HOMELIFE LANDMARK REALTY INC.