

\$2450.00 / Monthly - 2705 - 36 ELM DRIVE

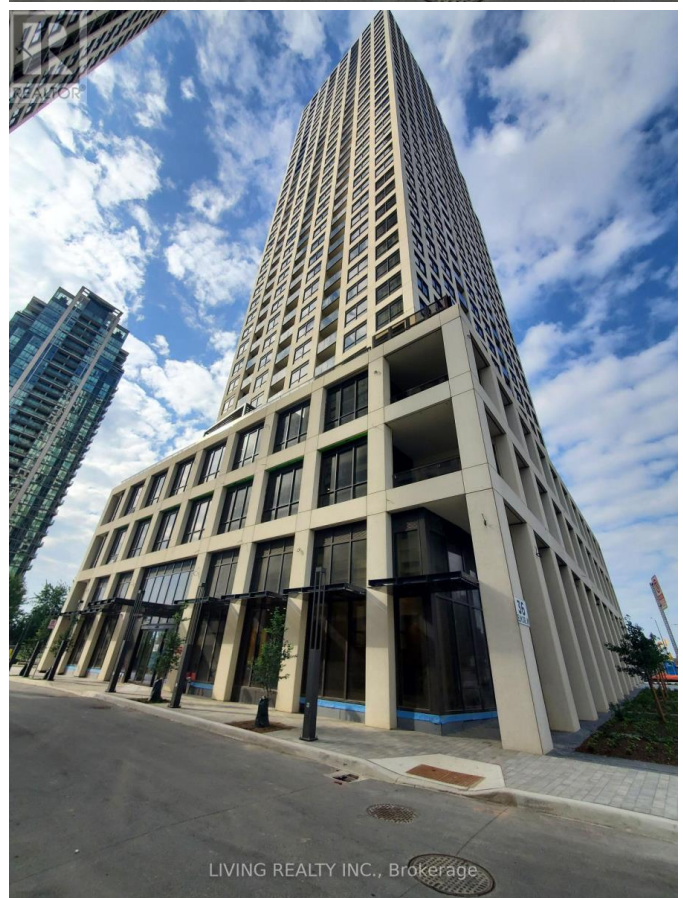
Listing ID: W9232700

\$2450.00 / Monthly

1 Bedrooms, 1 BathroomsSingle Family

2705 - 36 ELM DRIVE, Mississauga,
Ontario, L5B1P2

Brand New Condo.. Elegant Lobby. Smart
Layout with clear view. Looking for non-
smoker/ No pet. One parking and One
Locker included **** EXTRAS **** S/S
Appliances: Fridge, Stove, D/W, Washer/
Dryer. ONE Parking & Locker Included.
(id:54154)



\$2450.00 / Monthly - 2705 - 36 ELM DRIVE



MLS®, REALTOR®, and the associated logos are trademarks of The Canadian Real Estate Association

Data Provided by: Toronto Regional Real Estate Board

Last Modified: 30/07/2024 08:36:43 PM

Listing Office:LIVING REALTY INC.