

# \$3000.00 / Monthly - 211 - 30 ELM DRIVE W

## Listing ID: W9232319

**\$3000.00 / Monthly**

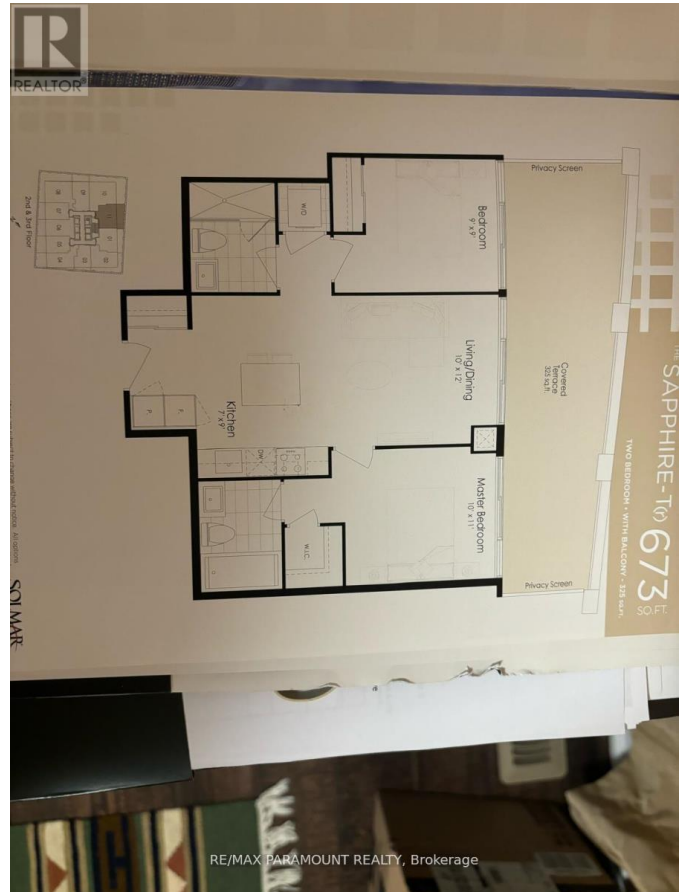
2 Bedrooms, 2 Bathrooms Single Family

211 - 30 ELM DRIVE W, Mississauga,  
Ontario, L5B1L9

Explore the gold standard of contemporary living at 30 Elm Drive West, suite 211 in the prestigious Solmar Edge Tower. This newly constructed condo offers an exceptional lifestyle in the heart of Mississauga's lively City Centre. Step into your ideal home and be enchanted by the modern open-plan layout, featuring impressive 9-foot ceilings and abundant natural light. The standout feature of this urban sanctuary is the expansive 325 sq ft terrace, accessible from both bedrooms and the living room, perfect for outdoor dining or relaxation with cityscape views. The chef-inspired kitchen is designed for culinary enthusiasts, highlighting a spacious quartz countertop island and high-quality stainless steel appliances. Two generously sized bedrooms ensure comfort and privacy, while the in-suite washer and dryer add convenience to daily life. \*\*\*\* EXTRAS \*\*\*\* Positioned in the heart of Mississauga, this condo offers unparalleled access to Mississauga Transit, Sheridan & Mohawk colleges, Celebration Square, Shopping centers, major highways (403, 401), hospitals, and parks (id:54154)



# \$3000.00 / Monthly - 211 - 30 ELM DRIVE W



MLS®, REALTOR®, and the associated logos are trademarks of The Canadian Real Estate Association  
Data Provided by: Toronto Regional Real Estate Board  
Last Modified: 30/07/2024 05:29:49 PM  
Listing Office:RE/MAX PARAMOUNT REALTY