

\$3350.00 / Monthly - 3004 - 3975 GRAND PARK DRIVE

Listing ID: W9231960

\$3350.00 / Monthly

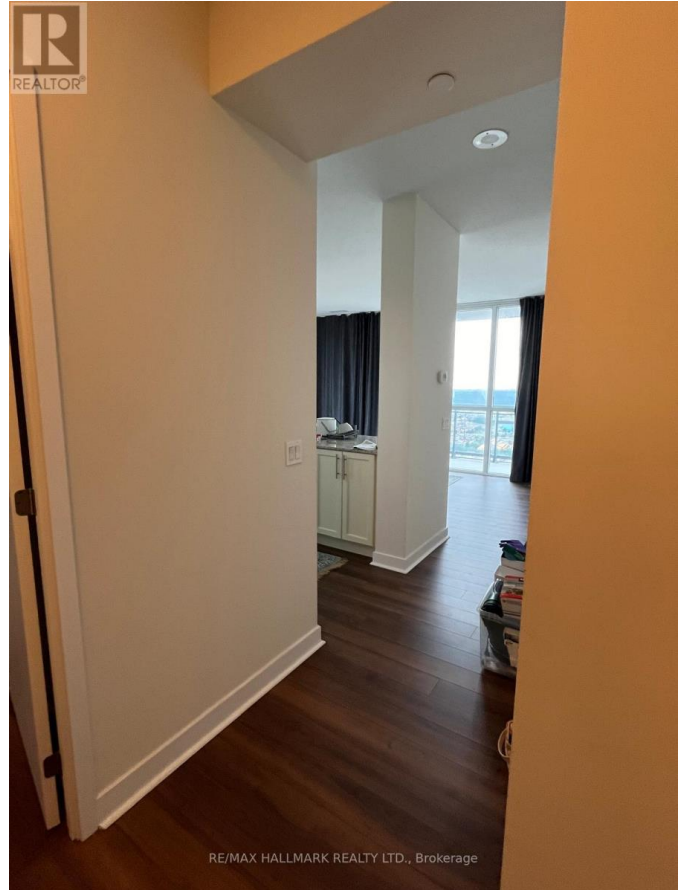
2 Bedrooms, 2 Bathrooms Single Family

3004 - 3975 GRAND PARK DRIVE,
Mississauga, Ontario, L5B0K4

Spacious open concept two bedroom plus den, two washroom unit in Pinnacle Grand Park 2. Panoramic South West view of the lake and sunset. 9 ft ceilings, floor-to-ceiling windows, wood flooring. Located in the heart of Mississauga, minutes from shops, restaurants, YMCA, Celebration Square One Mall, Sheridan College, and TNT Supermarket. Furnished option can be negotiated. **** EXTRAS **** S/S Appliances: Fridge, stove, microwave and B/I dishwasher. Stacker washer/dryer. All light fixtures. All window covering. 1 Parking and 1 locker. (id:54154)



\$3350.00 / Monthly - 3004 - 3975 GRAND PARK DRIVE



MLS®, REALTOR®, and the associated logos are trademarks of The Canadian Real Estate Association
Data Provided by: Toronto Regional Real Estate Board
Last Modified: 01/08/2024 03:36:14 PM
Listing Office:RE/MAX HALLMARK REALTY LTD.