

# \$679,000 - 3306 - 8 NAHANI WAY

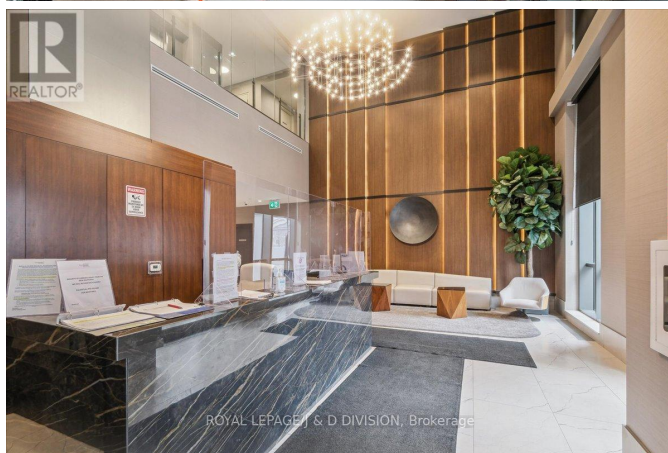
## Listing ID: W9175317

**\$679,000**

2 Bedrooms, 2 Bathrooms Single Family

3306 - 8 NAHANI WAY, Mississauga,  
Ontario, L4Z4J8

Luxury condominium in the Mississauga Square Residences. Featuring 2 bedrooms, 2 bathroom premium corner unit, 9 ft ceilings, laminate wide plank flooring, S/S appliances, quartz counter tops, and island. Huge wrap around outside terrace with spectacular unobstructed South West views of Lake Ontario. This unit has owned underground parking spot and 2 storage lockers. Building amenities include outdoor pool, exercise room, outdoor lounge, party room, and guest suites. Prime location in the heart of Mississauga, with new LRT at your door steps, walking distance to top schools, shopping, places of worship, easy access to Square One Mall, 403/401/407 Highways. (id:54154)



MLS®, REALTOR®, and the associated logos are trademarks of The Canadian Real Estate Association

Data Provided by: Toronto Regional Real Estate Board

Last Modified: 26/07/2024 07:36:56 PM

Listing Office:ROYAL LEPAGE/J & D DIVISION