

\$574,900 - 261 - 1575 LAKESHORE ROAD W

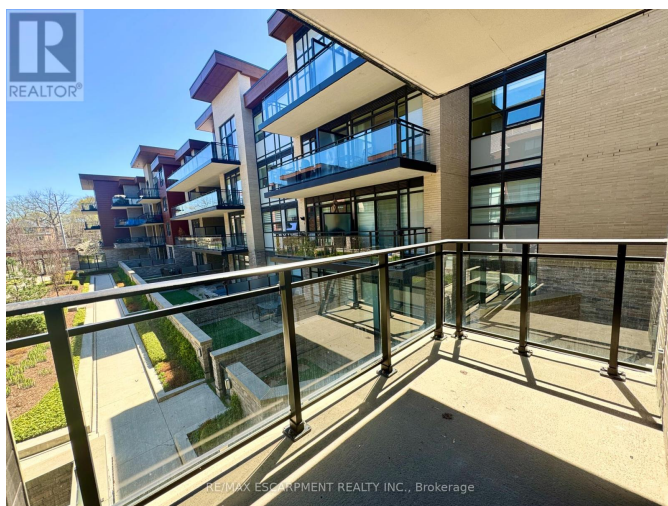
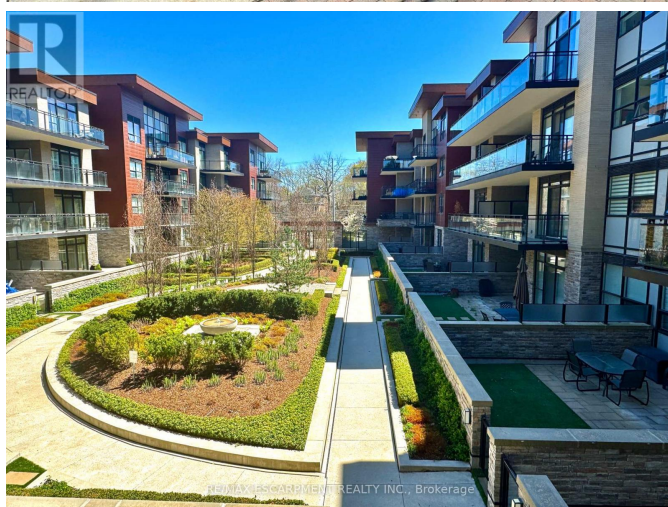
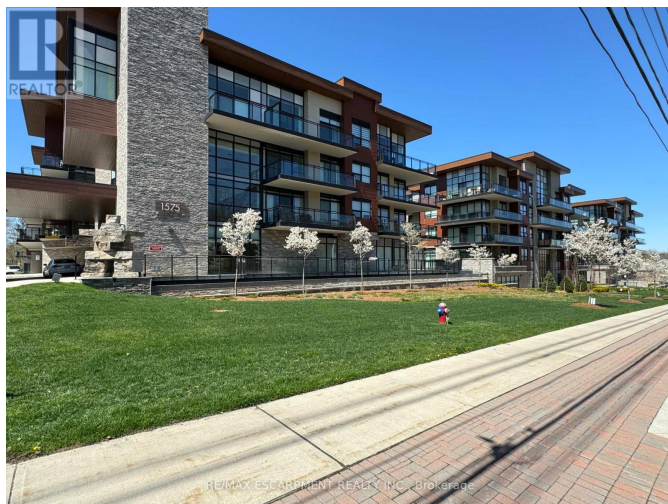
Listing ID: W9054117

\$574,900

1 Bedrooms, 1 Bathrooms Single Family

261 - 1575 LAKESHORE ROAD W,
Mississauga, Ontario, L5J0B1

Welcome to the Craftsman Condos, a stunning homage to the architectural brilliance of Frank Lloyd Wright, completed in 2019 and nestled in the heart of one of South Mississauga's hidden treasures, this exquisite building is just steps away from the historic charm of Clarkson Village and minutes from the bustling waterfront community of Port Credit. Imagine waking up to breathtaking sun-filled southern views overlooking tranquil gardens. This stunning upgraded unit features elegant California shutters, privacy glass sliding doors, and sleek laminate flooring throughout. Freshly painted and meticulously cleaned, this home is move-in ready within just two weeks. Why rent when you can own a piece of paradise? The Craftsman Condos offer a serene living environment close to some of the city's finest parks, including the picturesque Jack Darling Memorial Park. The spacious living area is enhanced with top-of-the-line appliances, blending comfort and style seamlessly. Indulge in an array of premium amenities, from the stunning rooftop terrace and BBQ area perfect for outdoor entertaining with panoramic views of lush parklands to the well-equipped gym for your fitness needs. Host unforgettable gatherings in the expansive party room that opens to the garden area, ideal for



\$574,900 - 261 - 1575 LAKESHORE ROAD W

celebrations and social events. Don't miss this opportunity to live in a community that embodies elegance, tranquility, and convenience. Make The Craftsman Condos your new home today! (id:54154)

MLS®, REALTOR®, and the associated logos are trademarks of The Canadian Real Estate Association
Data Provided by: Toronto Regional Real Estate Board
Last Modified: 24/07/2024 09:35:29 PM
Listing Office:RE/MAX ESCARPMENT REALTY INC.