

\$599,000 - 706 - 50 ELM DRIVE E

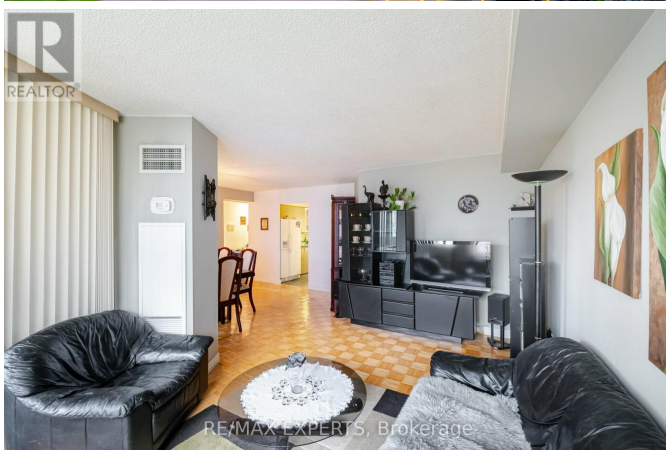
Listing ID: W9053692

\$599,000

3 Bedrooms, 2 Bathrooms Single Family

706 - 50 ELM DRIVE E, Mississauga,
Ontario, L5A3X2

Welcome To This Spacious 3 Bedroom Plus Den Unit In The Heart Of Mississauga Close To Transit, Schools, Hwy & All Amenities. This Gem Boasts 2 Full Baths, An Open Concept Living & Dining Area, A Large Storage/Laundry Room, An Enclosed Balcony With Open Windows For Fresh Air, Another Locker And Not One But Two Parking Spaces. Do Not Miss The Opportunity To See This Gem. (id:54154)



MLS®, REALTOR®, and the associated logos are trademarks of The Canadian Real Estate Association

Data Provided by: Toronto Regional Real Estate Board

Last Modified: 24/07/2024 05:37:52 PM

Listing Office:RE/MAX EXPERTS