

# \$624,900 - 122 - 601 SHORELINE DRIVE

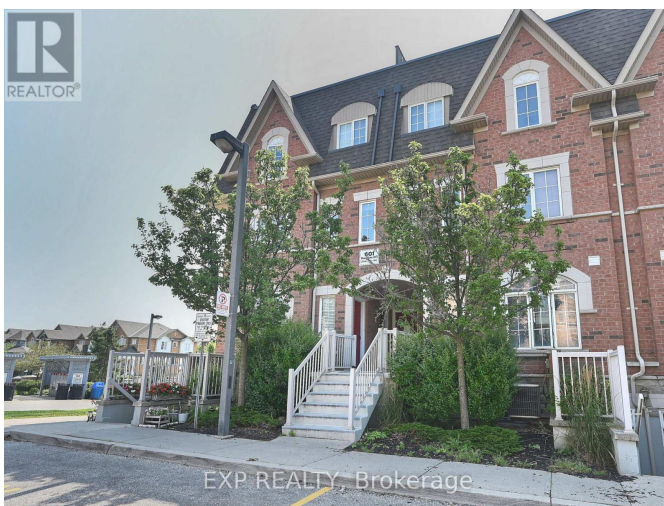
**Listing ID: W9051543**

**\$624,900**

2 Bedrooms, 1 Bathrooms Single Family

122 - 601 SHORELINE DRIVE,  
Mississauga, Ontario, L5B4K5

Welcome to this Well maintained 2 Bedroom **\*\*Main Floor\*\*** Corner Unit Stacked Townhome With Open Concept Living! Recently updated Bathroom with new vanity & Freshly painted. Located in the vibrant Cooksville Community! This family-friendly home is right next to Parks and schools. This Desirable neighbourhood is Accessible To Cooksville Go Station, located just Minutes to Square One Mall, Major Grocery stores, LCBO, Canadian Tire, Banks and so much more! Laminate Flooring Throughout for effortless maintenance! Relax in the Primary Bedroom With W/O to a Spacious private Balcony that overlooks the neighbourhood. Don't Miss out on this Turnkey Property! (id:54154)



MLS®, REALTOR®, and the associated logos are trademarks of The Canadian Real Estate Association

Data Provided by: Toronto Regional Real Estate Board

Last Modified: 29/07/2024 08:14:11 AM

Listing Office:EXP REALTY