

\$699,900 - 1711 - 156 ENFIELD PLACE

Listing ID: W9049850

\$699,900

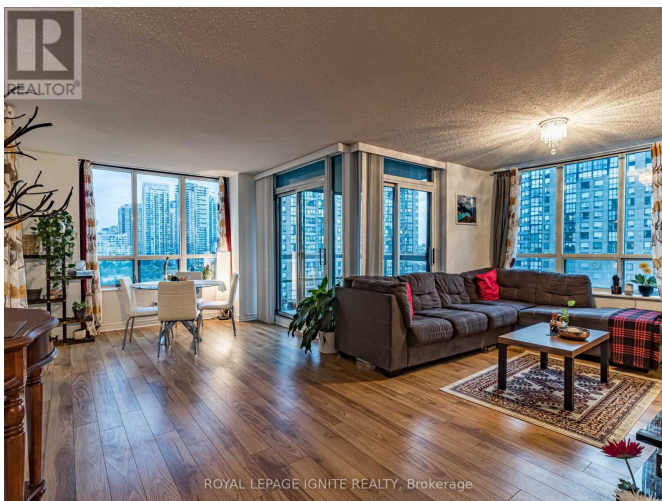
3 Bedrooms, 2 Bathrooms Single Family

1711 - 156 ENFIELD PLACE, Mississauga,
Ontario, L5B4L8

Welcome To Your New Home Among The
Largest Corner Suites In Square One!

Rarely Listed, This Hidden Gem Features
1244 Sq Ft Of Open Concept Living Space,
2 Br's & 2 Full Wr's, A Den Big Enough To
Be A Bedroom, Eat-In Kitchen, Gorgeous
Views And More! Condo Fee Includes
Parking, Locker AND ALL UTILITIES! A
Ton Of Building Amenities & Prime
Location Steps away from Transit, Living
Arts, Parks, Schools, Soon-To-Come LRT
and so much more. Mins from GO,
highways. DON'T MISS IT! **** EXTRAS

**** Check out a Ton of Amenities: Gym,
Squash, Tennis, Basketball, Pool, Party
Room, Theatre Room, Card Room, Billiard
Room, Plus More! (id:54154)



MLS®, REALTOR®, and the associated logos are trademarks of The Canadian Real Estate Association

Data Provided by: Toronto Regional Real Estate Board

Last Modified: 22/07/2024 05:37:22 PM

Listing Office:ROYAL LEPAGE IGNITE REALTY