

\$609,900 - 1012 - 1320 MISSISSAUGA VALLEY BOULEV

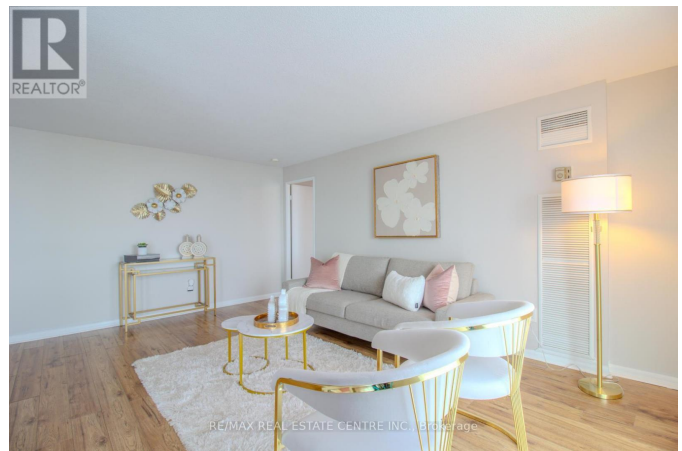
Listing ID: W9046557

\$609,900

3 Bedrooms, 2 Bathrooms Single Family

1012 - 1320 MISSISSAUGA VALLEY BOULEVARD, Mississauga, Ontario, L5A3S9

This penthouse offers unobstructed views featuring a spacious, sun-filled 3-bedroom, 2 full-bath unit, with over 1200 square feet of living space. Enjoy an open-concept floor plan with large windows and laminate floors throughout. The kitchen features a beautiful backsplash, built-in appliances, and ample cabinetry space. The sunroom provides direct access to a large balcony, perfect for year-round enjoyment. Down the hall, you'll find the primary suite, elevated with a large window, a 4-piece en-suite, and a spacious walk-in closet. Two more great-sized bedrooms share a 3-piece bath. The laundry room offers ample storage space, and the unit comes equipped with 1 parking spot and 1 locker. The building is conveniently located near grocery stores, schools, walking trails, the hospital, major highways, Square One Shopping Mall, and more. This is a fantastic opportunity for young working couples and families. **** EXTRAS **** Building amenities include a gym, sauna, party room, tennis court, reading room, bike storage, and more. The maintenance fee covers all utilities, cable TV, and high-speed internet. (id:54154)



\$609,900 - 1012 - 1320 MISSISSAUGA VALLEY BOULEV

Listing Office:RE/MAX REAL ESTATE CENTRE INC.