

\$799,000 - 3408-36 ELM DRIVE

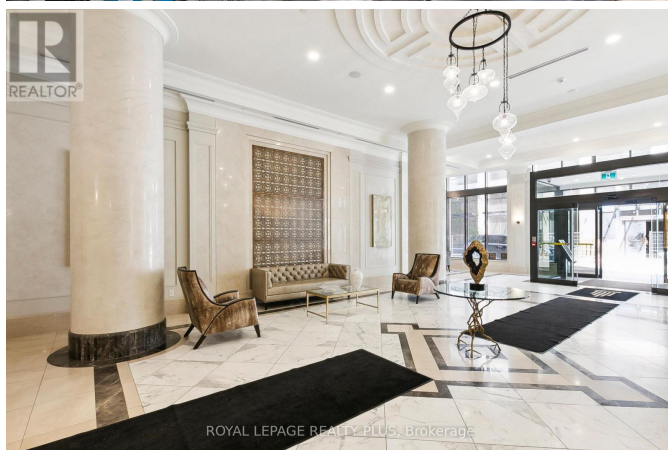
Listing ID: W9044811

\$799,000

2 Bedrooms, 2 Bathrooms Single Family

3408-36 ELM DRIVE, Mississauga,
Ontario, L5B1P2

Experience unparalleled living in this exquisite, modern corner unit, offering breathtaking and unobstructed views. The expansive master bedroom features an ensuite and a spacious closet, ensuring comfort and convenience. The sleek, contemporary kitchen is equipped with top-of-the-line stainless steel appliances and a built-in island, perfect for culinary enthusiasts. The unit also boasts a large second bedroom, providing ample space for family or guests. Uniquely positioned with the only balcony on the building's side, this residence offers exclusive, unobstructed vistas, creating a serene and private outdoor retreat. Nestled in a prime location, the property is surrounded by an array of shopping destination sand picturesque parks, enhancing the urban living experience. With its combination of modern design, premium amenities, and an enviable location, this unit is a rare find and an absolute must-see. Do not miss the opportunity to make this exceptional residence your new home. (id:54154)



MLS®, REALTOR®, and the associated logos are trademarks of The Canadian Real Estate Association

Data Provided by: Toronto Regional Real Estate Board

Last Modified: 18/07/2024 01:39:17 PM

Listing Office:ROYAL LEPAGE REALTY PLUS