

\$2980.00 / Monthly - 820 - 8 NAHANI WAY S

Listing ID: W9044750

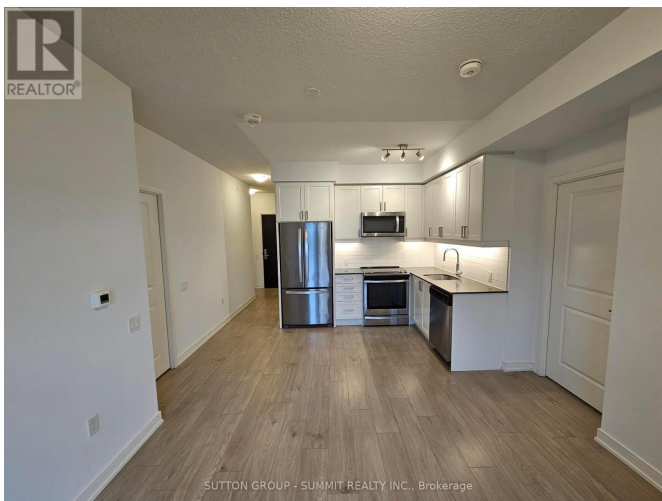
\$2980.00 / Monthly

3 Bedrooms, 2 Bathrooms Single Family

820 - 8 NAHANI WAY S, Mississauga,
Ontario, L4Z0C6

Step into luxurious living in this stunning 2-bedroom + den, 2-bathroom condo in the heart of Mississauga. Offering over 700 square feet of freshly painted, open-concept space bathed in natural light, this unit is the epitome of urban elegance. A functional kitchen with modern amenities overlooks the spacious living area, creating an inviting ambiance for entertaining or relaxation. The suite comes complete with a locker and parking space, ensuring all your storage and commuting needs are effortlessly met. Location is unbeatable situated just minutes away from a plethora of restaurants, grocery stores, and the largest shopping mall in GTA, Square One. For those on the go, enjoy easy access to highway 401 and 403, as well as numerous public transit options. Families will appreciate nearby elementary and high schools, while the close proximity to community centers brings recreation right to your doorstep. Experience the best of city living, where comfort meets convenience!

****** EXTRAS ****** Unit includes stainless steel fridge, dishwasher, oven, stove, microwave, washer, dryer. 24hr Concierge, Gym, Visitor Parking, Party room, and more! (id:54154)



\$2980.00 / Monthly - 820 - 8 NAHANI WAY S



MLS®, REALTOR®, and the associated logos are trademarks of The Canadian Real Estate Association

Data Provided by: Toronto Regional Real Estate Board

Last Modified: 18/07/2024 01:39:14 PM

Listing Office: SUTTON GROUP - SUMMIT REALTY INC.