

\$2650.00 / Monthly - 1311 - 360 SQUARE ONE DRIVE

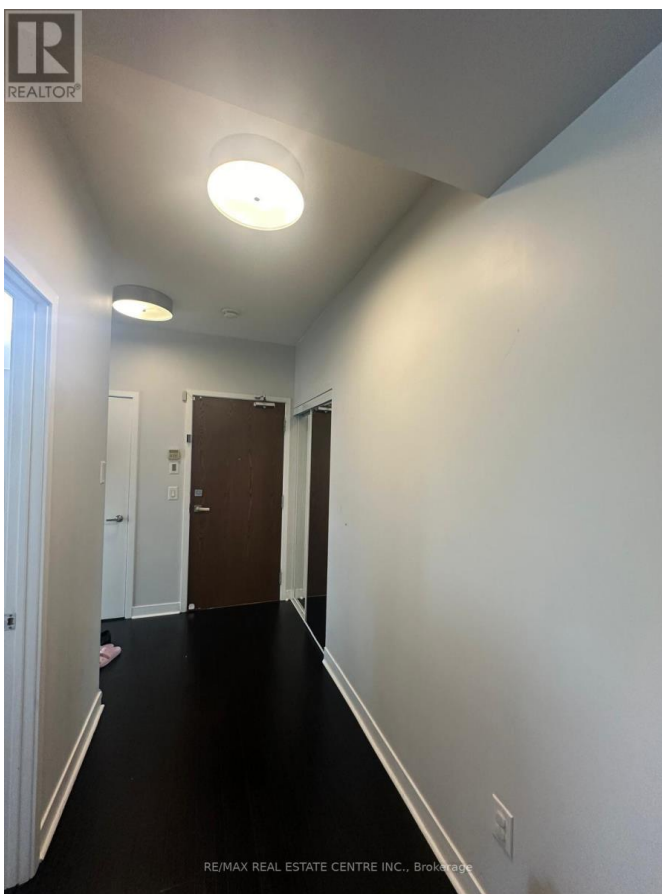
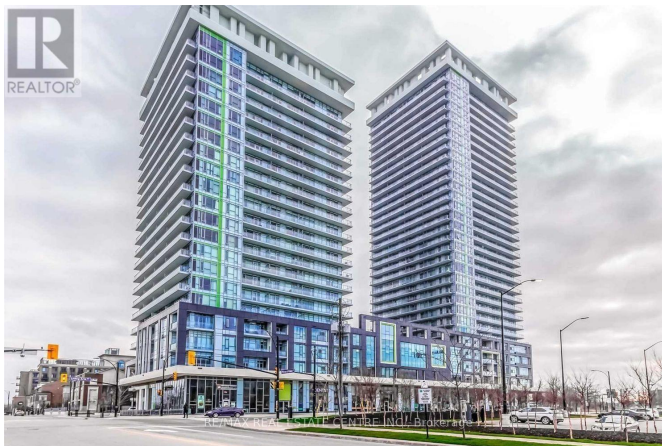
Listing ID: W9040688

\$2650.00 / Monthly

2 Bedrooms, 2 Bathrooms Single Family

1311 - 360 SQUARE ONE DRIVE,
Mississauga, Ontario, L5B0G2

Located At Daniel's Limelight, This Stunning 1+1 Bed 2 Bath Condo Nestled In The Highly Demanding Neighborhood Of Square One. This Corner Unit With Its Open Concept Layout & Large Wrap Around Balcony Offers You Views That Cannot Be Beat! Towering Over The Sheridan College, Living Arts Centre, Square One Mall, It Proximity To The Go & Transit Station, Restaurants And Mississauga's Central Library Is Great. Very Close To Hwy 401 & Many Other Amenities **** EXTRAS **** Impressive Amenities Include A Gym, Basket-Ball Court, Outdoor Bbq Area & Party Room. Partially Furnished. Comes With Some Furniture. (id:54154)



RE/MAX REAL ESTATE CENTRE INC., Broker/age

\$2650.00 / Monthly - 1311 - 360 SQUARE ONE DRIVE



MLS®, REALTOR®, and the associated logos are trademarks of The Canadian Real Estate Association

Data Provided by: Toronto Regional Real Estate Board

Last Modified: 25/07/2024 03:37:52 PM

Listing Office:RE/MAX REAL ESTATE CENTRE INC.