

# \$3000.00 / Monthly - 610 - 4070 CONFEDERATION PARKWAY

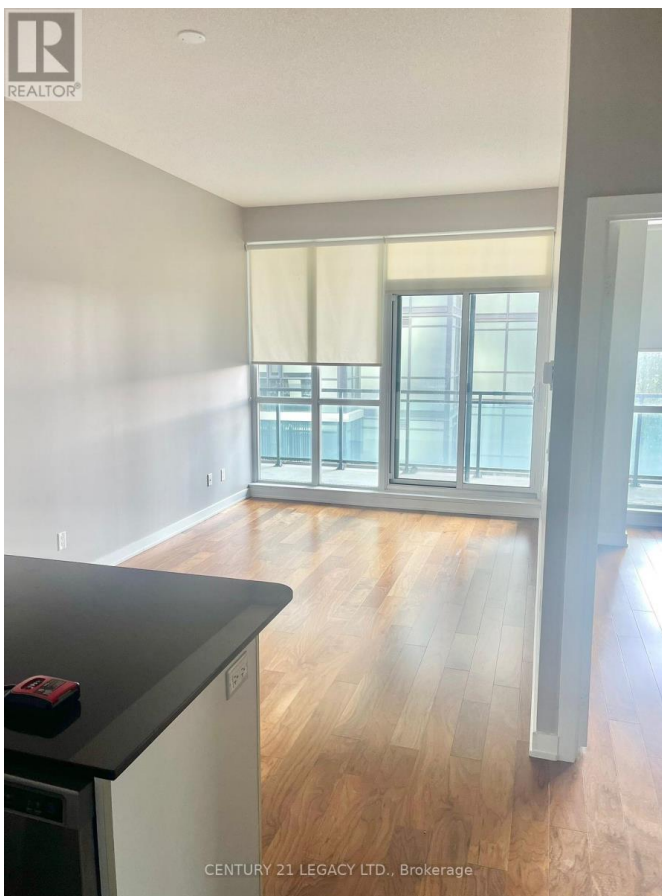
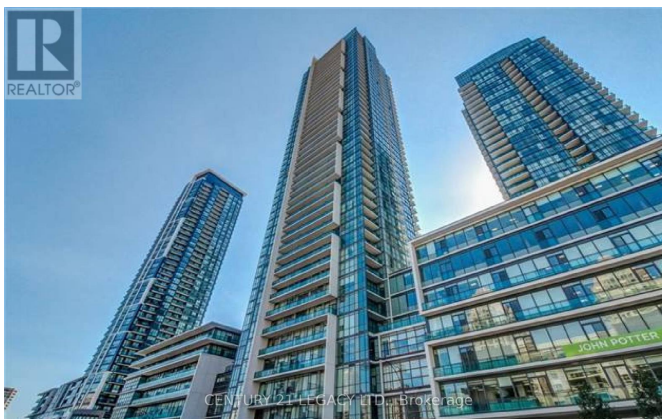
## Listing ID: W9030649

**\$3000.00 / Monthly**

2 Bedrooms, 2 Bathrooms Single Family

610 - 4070 CONFEDERATION  
PARKWAY, Mississauga, Ontario, L5B0E9

In the heart of Central Mississauga, Parkside Village Condos stands as a beacon of luxurious urban living. One of the most practical layouts- with big bedrooms. Situated within a stone's throw of Celebration Square, Square One Shopping Centre & Kariya Park. Condo provides a perfect layout & meticulously maintained interiors providing epitome of modern living in the high-demand area where every amenity is at your doorstep. Access to major highways, public transit. Much bigger than neighbouring newly built condos up for lease. Strong Profiles can get higher preference. Condo offers an open-concept living that seamlessly transitions into a well-appointed kitchen. Bedrooms are strategically placed to ensure privacy, & the living spaces flow harmoniously, creating an inviting & functional environment. This condo has been professionally cleaned & meticulously maintained to ensure a pristine living environment. Granite countertop throughout - kitchen and washrooms \*\*\*\*\* EXTRAS \*\*\*\*\* Full Size In-Suite Washer/Dryer, B/I Microwave, Stove, 24Hrs Security, Visitor Prkng, Guest Suites, Swimming Pool, Sauna, Exercise Room, Party/Meeting Rooms, Kids Play Room. Unit comes with 1 Parking Spot & Big Sized Storage (id:54154)



# \$3000.00 / Monthly - 610 - 4070 CONFEDERATION PARK

---

MLS®, REALTOR®, and the associated logos are trademarks of The Canadian Real Estate Association

Data Provided by: Toronto Regional Real Estate Board

Last Modified: 20/07/2024 01:28:55 AM

Listing Office: CENTURY 21 LEGACY LTD.