

\$727,000 - 1106 - 4675 METCALFE AVENUE

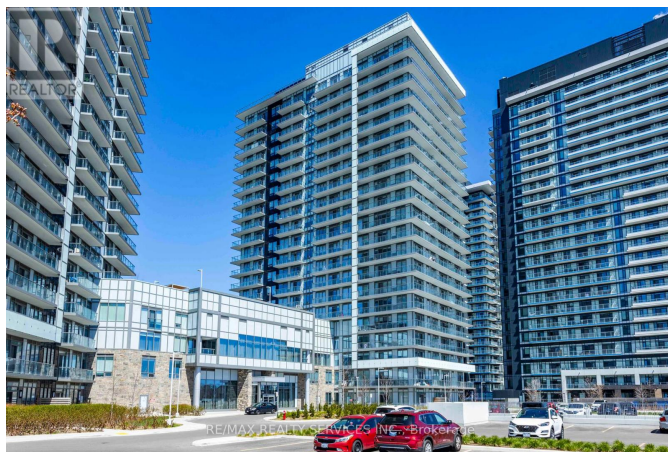
Listing ID: W8474648

\$727,000

3 Bedrooms, 2 Bathrooms Single Family

1106 - 4675 METCALFE AVENUE,
Mississauga, Ontario, L5M0Z8

Erin Square Condos by Pemberton Group in The Heart of Mississauga: Not even 2 years young; This 2+Den condo on the 11th floor with 870 Sqft (As Per Builder's Plan) has 2 Full Washrooms and West view from a high floor towards sunset, Pool and Park! The Unit Has A Spacious Open Concept Floor Plan and Practical Layout with Split Bedrooms. Ceilings are 9 feet and smooth. Laminate Flooring Throughout, S/S Appliances and Stone Counter Tops ---- One(1) Parking & One(1) Bicycle/Locker/Storage Unit Included. Excellent condition! (id:54154)



MLS®, REALTOR®, and the associated logos are trademarks of The Canadian Real Estate Association

Data Provided by: Toronto Regional Real Estate Board

Last Modified: 31/07/2024 07:04:08 PM

Listing Office:RE/MAX REALTY SERVICES INC.