

\$599,900 - 178 - 2001 BONNYMEDE DRIVE

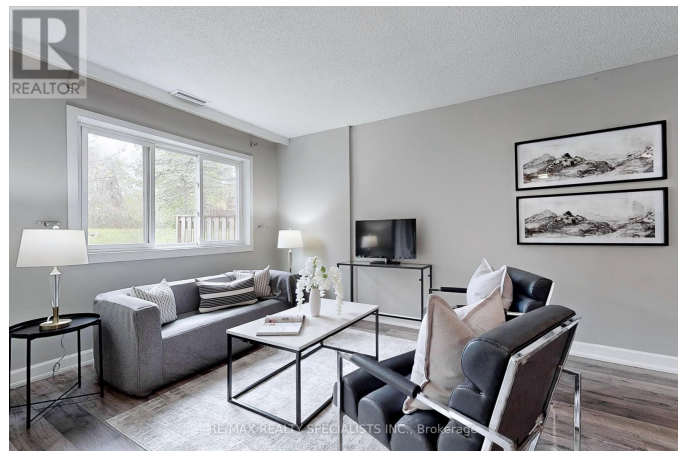
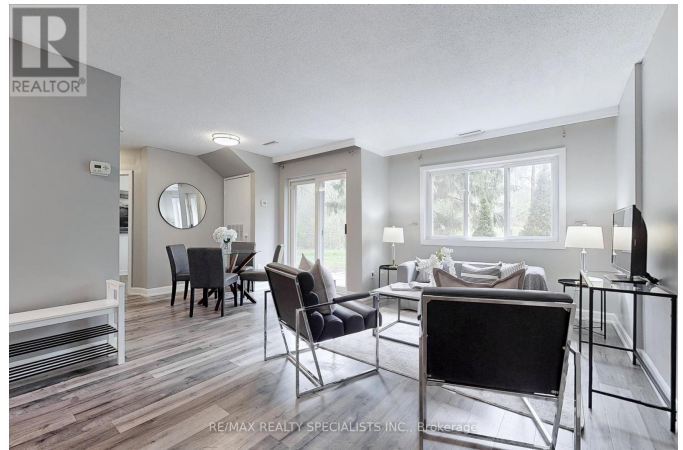
Listing ID: W8324210

\$599,900

3 Bedrooms, 2 Bathrooms Single Family

178 - 2001 BONNYMEDE DRIVE,
Mississauga, Ontario, L5J4H8

Introducing this delightful 2+1 bed, 2-storey condo in the heart of Clarkson Village, boasting recent renovations and a spacious ground level unit with backyard greenspace. Step into a bright open concept layout complemented by fresh laminate flooring throughout main living spaces. The kitchen showcases modern updates including porcelain tile floors, quartz counters, a tile backsplash, and stainless steel appliances. Unwind in the rare, well-maintained backyard greenspace, accessible from the living and dining areas. Upstairs, discover two generously sized bedrooms adorned with mirrored closets and ample windows for natural light. Convenience is key with a main floor laundry room. Residents of this low-rise haven can indulge in amenities such as an indoor pool, fitness center, sauna, and party/meeting room, all amidst beautifully manicured green spaces. Situated just moments away from schools, parks, trails, Lake Ontario, grocery stores, banks, and restaurants, this gem offers an ideal location. Commuting is a breeze with Clarkson GO and public transit within walking distance, as well as easy access to Highways QEW/427/401. **** EXTRAS **** 2nd Parking Is rented \$50/Month (id:54154)



\$599,900 - 178 - 2001 BONNYMEDE DRIVE

MLS®, REALTOR®, and the associated logos are trademarks of The Canadian Real Estate Association

Data Provided by: Toronto Regional Real Estate Board

Last Modified: 20/05/2024 03:27:56 PM

Listing Office:RE/MAX REALTY SPECIALISTS INC.