

\$688,800 - 1901 - 388 PRINCE OF WALES DRIVE

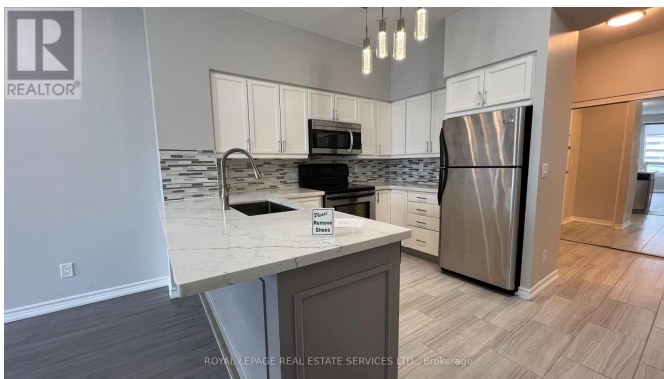
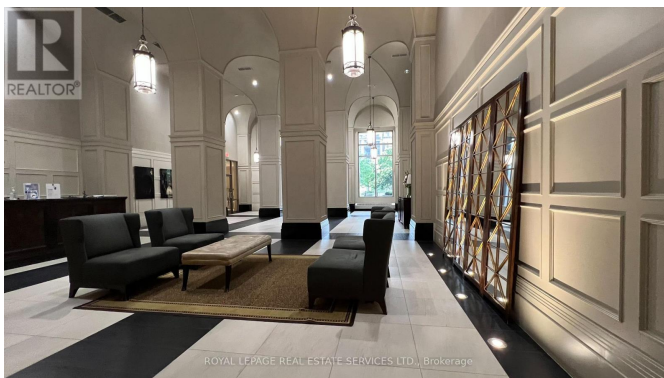
Listing ID: W8321108

\$688,800

2 Bedrooms, 2 Bathrooms Single Family

1901 - 388 PRINCE OF WALES DRIVE,
Mississauga, Ontario, L5B0A1

Prime location in Mississauga City Centre/Square One. Luxury Daniel built One Park Tower. Spacious 2 bedrooms with 2 washrooms, a Balcony and One Parking/One Locker. Newer laminate floors, Newer B/I Dishwasher(2023), No carpets. Bright south exposure with Lake and Park view. Split bedrooms layout. Steps to Square One shopping mall, GO bus station, Mississauga bus terminal, Sheridan College, Groceries. Community park next to the building. Easy access to Hwy 403, 401, QEW. Close to new LRT. Excellent amenities: Virtual Golf, Gym, Indoor Pool, Patio w/BBQ, Guest suites, Party/meeting room, 24 hr concierge. (Pictures were taken when vacant.) (id:54154)



MLS®, REALTOR®, and the associated logos are trademarks of The Canadian Real Estate Association

Data Provided by: Toronto Regional Real Estate Board

Last Modified: 14/05/2024 12:47:07 AM

Listing Office:ROYAL LEPAGE REAL ESTATE SERVICES LTD.