

\$669,000 - 713 - 55 STRATHAVEN DRIVE

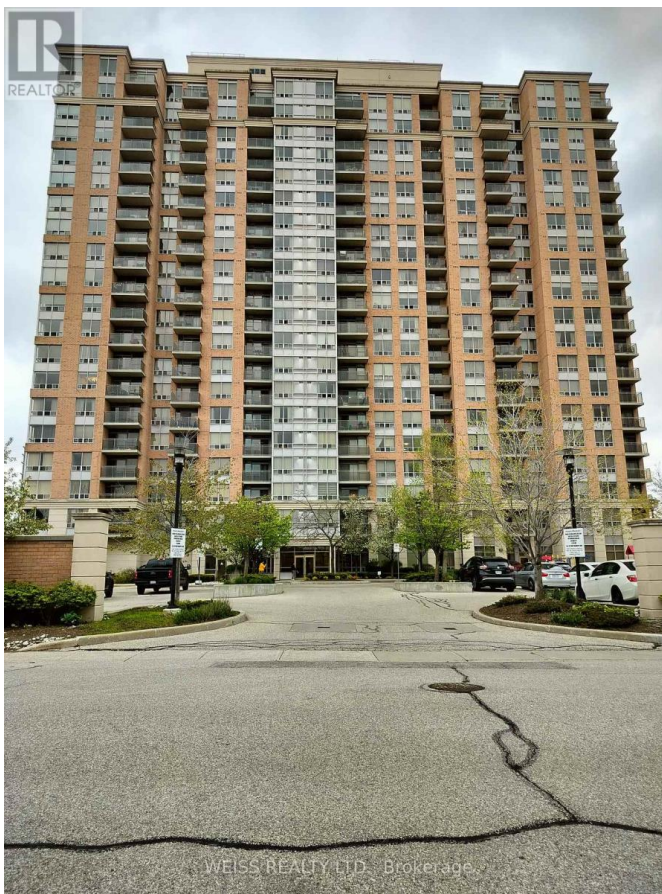
Listing ID: W8313760

\$669,000

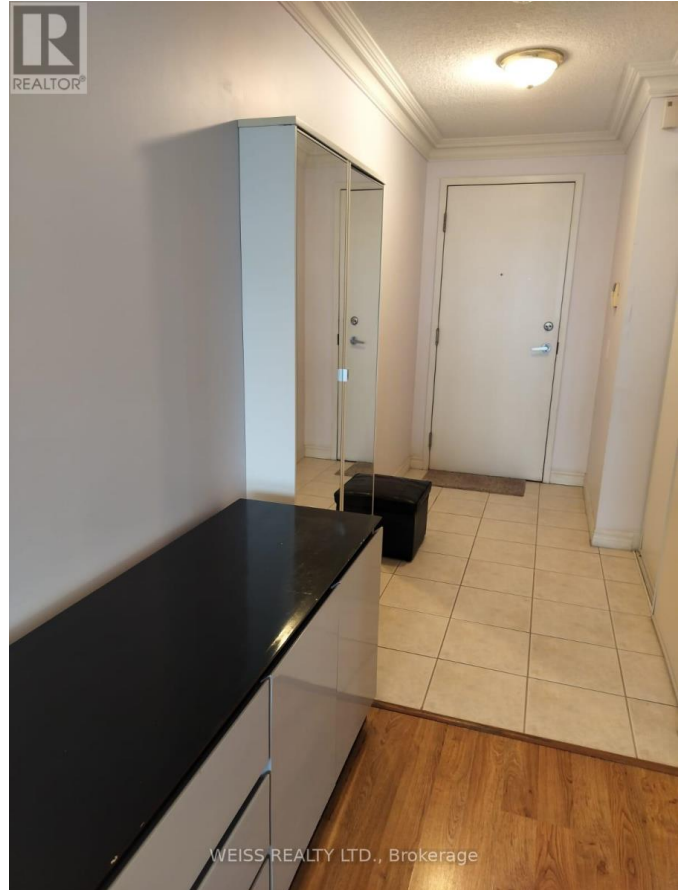
2 Bedrooms, 2 Bathrooms Single Family

713 - 55 STRATHAVEN DRIVE,
Mississauga, Ontario, L5R4G9

Located in a high demand area in the heart of Mississauga. Built by Tridel, bright & spacious corner suite with unobstructed city views. 2 bedrooms & 2 full bathrooms. Crown mouldings. 2 side by side parking included. 24/7 concierge services. Close to everything, easy access to highways. Future Hurontario LRT. Steps to Square one Shopping Centre **** EXTRAS **** Monthly maintenance fee includes Utilities (Heat, Hydro, Water and Central Air) (id:54154)



\$669,000 - 713 - 55 STRATHAVEN DRIVE



MLS®, REALTOR®, and the associated logos are trademarks of The Canadian Real Estate Association
Data Provided by: Toronto Regional Real Estate Board
Last Modified: 14/05/2024 12:43:35 AM
Listing Office:WEISS REALTY LTD.