

\$749,999 - 5110 - 3900 CONFEDERATION PARKWAY

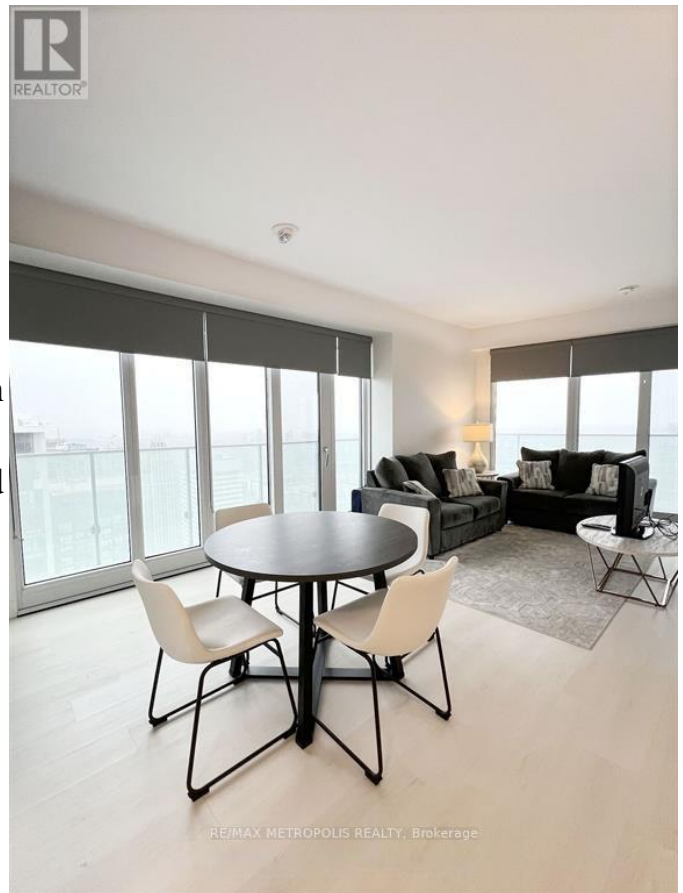
Listing ID: W8303498

\$749,999

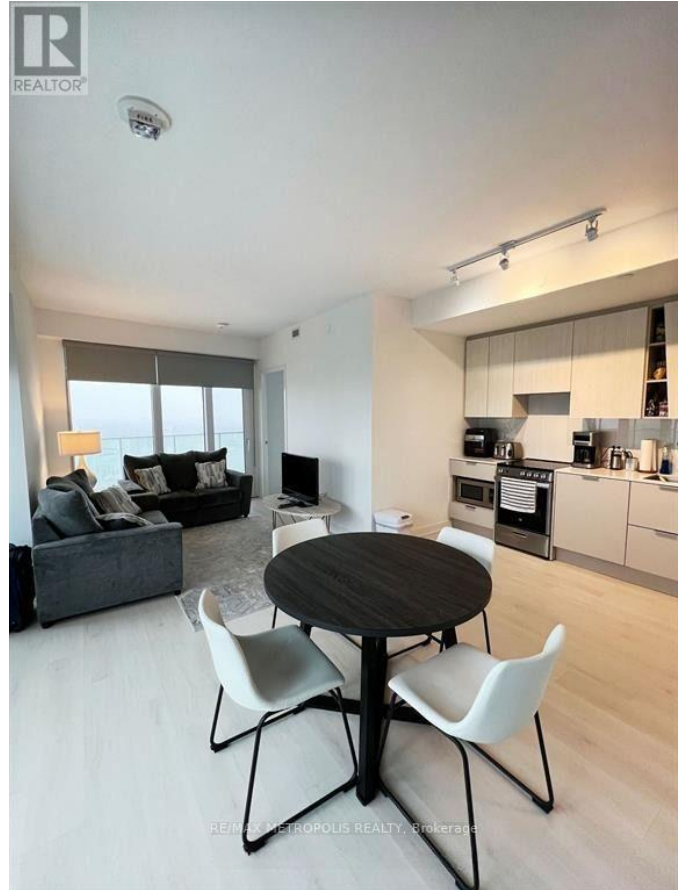
3 Bedrooms, 2 Bathrooms Single Family

5110 - 3900 CONFEDERATION
PARKWAY, Mississauga, Ontario,
L5B0M3

High-up in the sky! One of the most sought after floorplans in the highly coveted M-City condos. Overlooking an unobstructed East facing view with a wrap-around balcony featuring breathtaking views. Enjoy ample natural light in this two bedroom corner plus den corner unit with high ceilings, spacious living areas, large floor to ceiling windows and an open concept design featuring luxurious finishes and appliances. Be the first to live in this tastefully upgraded unit with convenient access to Square One, transit, and major highways. **** EXTRAS **** One of the largest units in the building! 1 parking and 1 locker unit included. (id:54154)



\$749,999 - 5110 - 3900 CONFEDERATION PARKWAY



MLS®, REALTOR®, and the associated logos are trademarks of The Canadian Real Estate Association

Data Provided by: Toronto Regional Real Estate Board

Last Modified: 14/05/2024 12:39:19 AM

Listing Office:RE/MAX METROPOLIS REALTY