

\$3000.00 / Monthly - 45 - 5050 INTREPID DRIVE

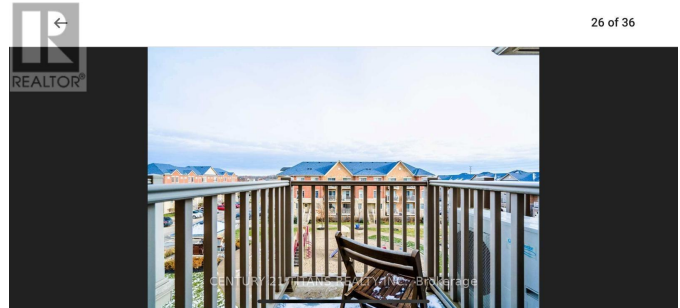
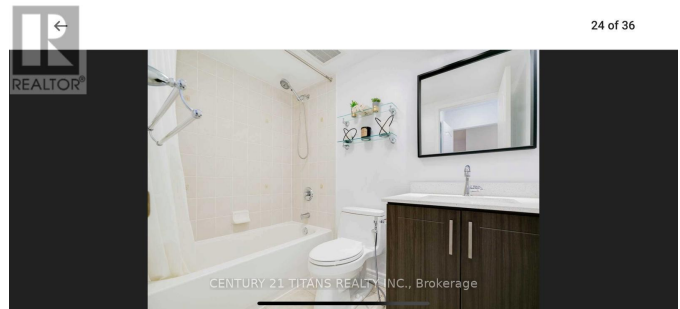
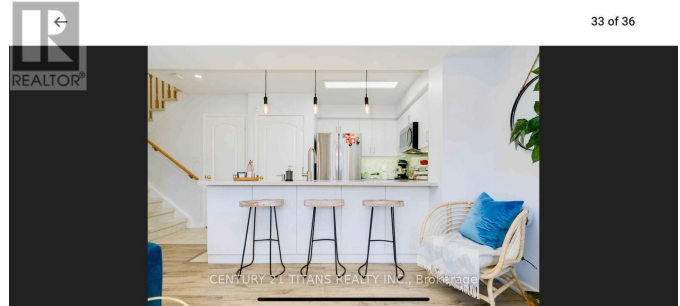
Listing ID: W8291380

\$3000.00 / Monthly

2 Bedrooms, 2 Bathrooms Single Family

45 - 5050 INTREPID DRIVE, Mississauga,
Ontario, L5M0E8

Amazing Two Bedroom & 2 Bath Stacked
Townhouse In a Quiet Family-Friendly
Community Of Churchill Meadows. Open
Concept Main Floor With Tons Of Natural
Light & Private Balcony Overlooking Park
Master Br W/ 4Pc En-suite And Walk In
Closet. Spacious Open Concept Kitchen W/
Breakfast Bar, With Two Private Balconies.
1 Surface Parking Space Close To Suite
Entrance Included In The Rent. Great For
Young Professionals Or A Young Couple.
Great Location!! Minutes Walk To All
Amenities, Shopping Centers, Schools***
Close To Erin Mills, Credit Valley Hospital,
Hwy 403. **** EXTRAS **** Utilities
Extra (id:54154)



MLS®, REALTOR®, and the associated logos are trademarks of The Canadian Real Estate Association

Data Provided by: Toronto Regional Real Estate Board

Last Modified: 14/05/2024 12:34:23 AM

Listing Office: CENTURY 21 TITANS REALTY INC.