

# \$659,900 - 1511 - 55 ELM DRIVE W

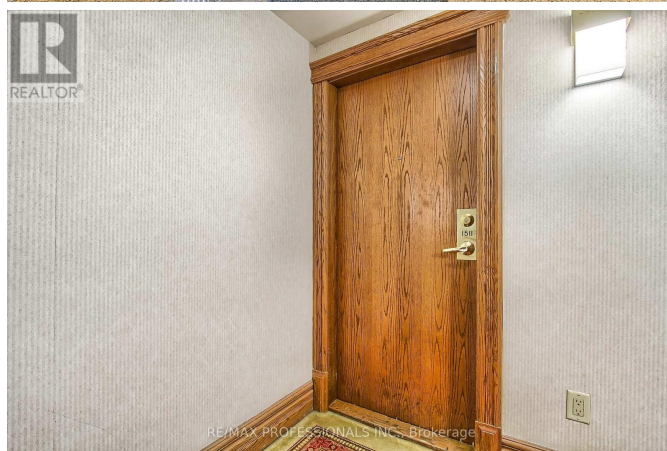
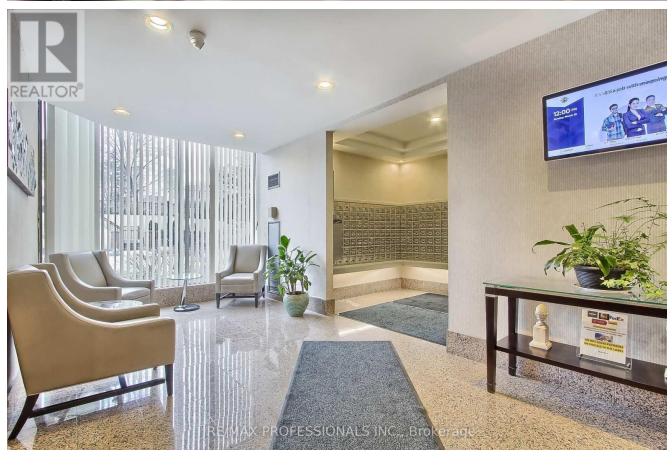
## Listing ID: W8278024

**\$659,900**

3 Bedrooms, 2 Bathrooms Single Family

1511 - 55 ELM DRIVE W, Mississauga,  
Ontario, L5B3Z3

This spacious corner unit is move-in ready, offering a large layout with beautiful finishes. The master bedroom features a generous walk-in closet and an ensuite washroom with a tub and separate glass-door shower. The second bedroom is also spacious. With its smart layout, large solarium, and plenty of sunlight, this unit provides a comfortable living space. Located in a prime area, it is within walking distance to Square One. \*\*\*\* EXTRAS \*\*\*\* Includes All Appliances And Elfs. 2 Parking Spots. A Ton Of Amenities. 24-Hr Gatehouse Security. Rooftop Indoor Pool. Hot Tub, Party Room, Sauna, Pool Table, 2 Tennis Courts And Much More. (id:54154)



MLS®, REALTOR®, and the associated logos are trademarks of The Canadian Real Estate Association

Data Provided by: Toronto Regional Real Estate Board

Last Modified: 14/05/2024 12:31:36 AM

Listing Office:RE/MAX PROFESSIONALS INC.