

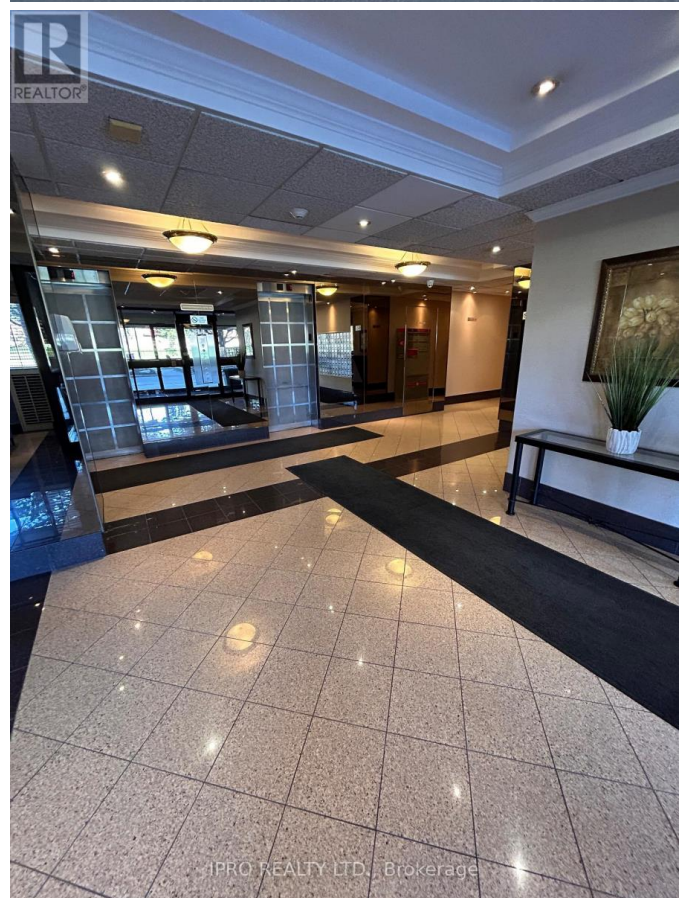
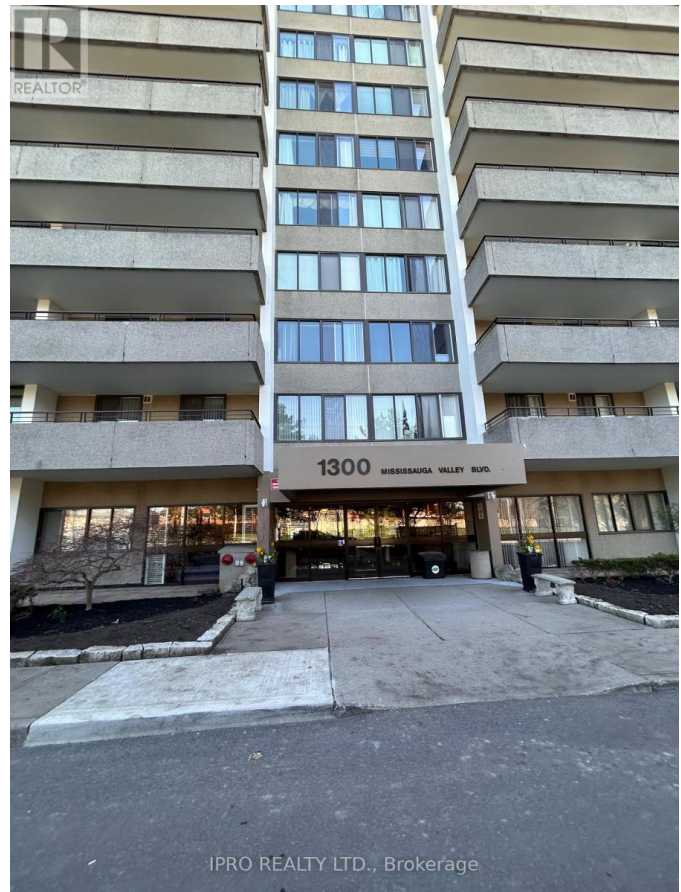
Listing ID: W8275012

\$544,900

3 Bedrooms, 2 BathroomsSingle Family

1405 - 1300 MISSISSAUGA VALLEY
BOULEVARD, Mississauga, Ontario,
L5A3S9

Large Spacious Penthouse level 3 bedroom Condo, featuring a large open Balcony w/ south views, you can see D/T Toronto and the lake! Great working kitchen with, large storage/laundry room off of kitchen, 2pc ensuite off master bedroom, no carpets in the entire unit! Great central location, easy walk to Square One, Go Bus, Mississauga Transit, Sheridan College. Don't miss this opportunity, Condo fees include all utilities (id:54154)



\$544,900 - 1405 - 1300 MISSISSAUGA VALLEY BOULEV



MLS®, REALTOR®, and the associated logos are trademarks of The Canadian Real Estate Association

Data Provided by: Toronto Regional Real Estate Board

Last Modified: 14/05/2024 12:30:24 AM

Listing Office:IPRO REALTY LTD.