

\$879,900 - #43 -601 SHORELINE DR

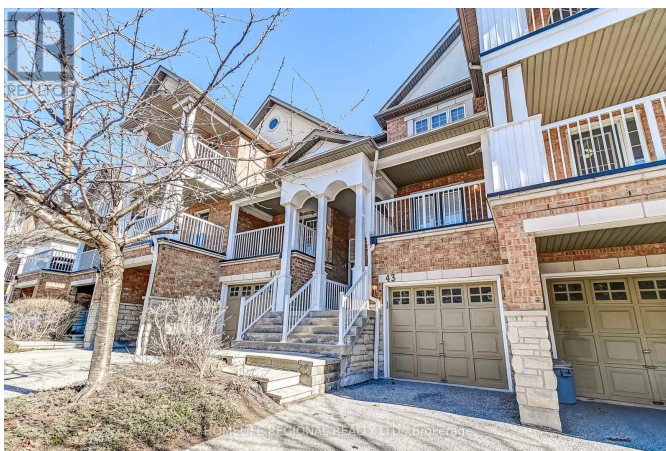
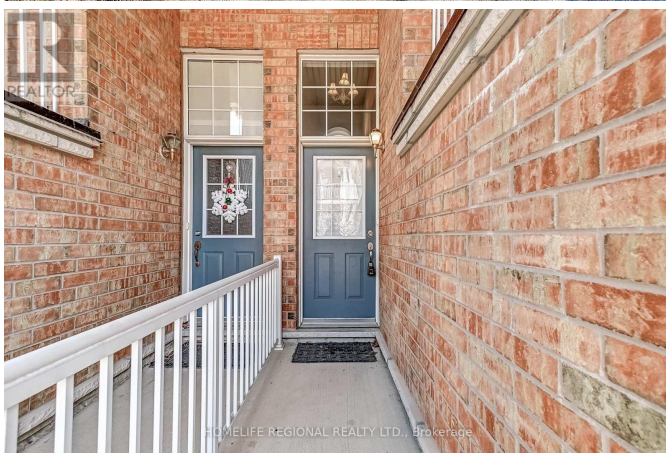
Listing ID: W8261786

\$879,900

4 Bedrooms, 2 Bathrooms Single Family

#43 -601 SHORELINE DR, Mississauga,
Ontario, L5B4K7

Beautiful 3 Bedroom+Den, 2 Bath. Main Level features a Beautiful Kitchen & Ss Appliances, Quartz Counters & W/O To Balcony-Perfect For Entertaining. Hardwood Floors, Updated Bathrooms. Upper Level features 3 Spacious Bedrooms, Gorgeous Main Bathroom W/Glass Shower, Lower Level Features Laundry Room W/Front Loader Washer/Dryer, Laminate Flooring & Bedroom/Office/Den with walk out to Yard. Located In Desirable High Park Village! Ideal For Young Professionals. **** EXTRAS **** Across From Park & More! Premium Location, Next to Home Depot, Loblaw Superstore, Shoppers Drug Mart, Banks, LCBO. Minutes To Transit, GO, Sq 1, Trillium Hospital, UofT Mississauga Campus, QEW & Hwy 403 (id:54154)



MLS®, REALTOR®, and the associated logos are trademarks of The Canadian Real Estate Association

Data Provided by: Toronto Regional Real Estate Board

Last Modified: 05/05/2024 08:04:14 AM

Listing Office:HOMELIFE REGIONAL REALTY LTD.