

\$729,000 - ##410 -4655 METCALFE AVE

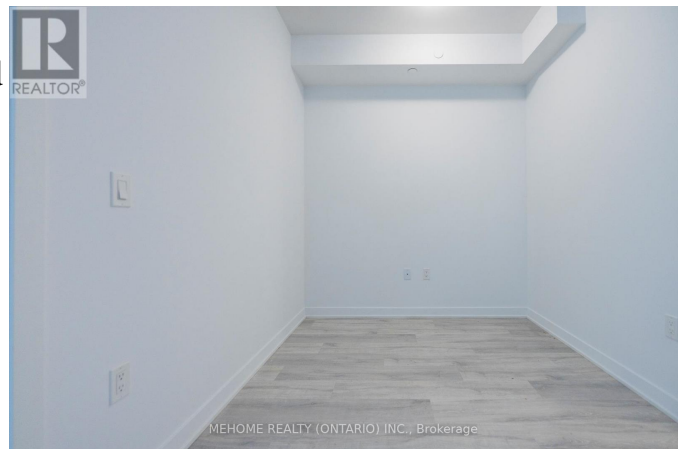
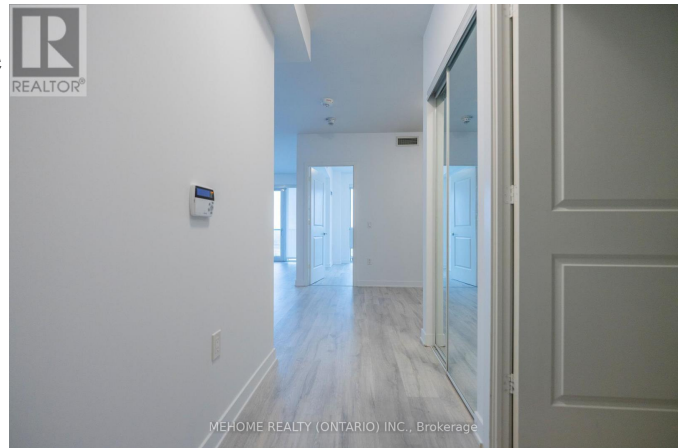
Listing ID: W8236076

\$729,000

3 Bedrooms, 2 Bathrooms Single Family

##410 -4655 METCALFE AVE,
Mississauga, Ontario, L5M0Z7

Welcome to Erin Square Condos. 1-Year New Building In The Heart Of Mississauga Built By One of The Leading Players In The Industry - Pemberton Group. This Large 2-Bed + Den / 2 Bath Unit Features Practical Layout With Open Concept and Split Bedroom Floor Plan. Huge Balcony With Clear Views. Walk-in Closets in Each Bedroom. Good Size Den is Perfect for Home Office. 9" Smooth Ceilings, 7 1/2" Wide Plank Laminate Flooring Throughout, Porcelain Floor Tiles In Bathrooms, Stone Counter Tops, Large Kitchen With an Island & S/S Appliances. Building Amenities Include Gym, Yoga Room, Theatre, Rooftop Outdoor Pool, Terrace, Party Room, Rooftop Patio & Attention Pet Lovers - a Pet Washing Center. The List Goes On. Quick Access To Hwys 403, 407. Steps To Erin Mills Town Centre's Endless Shops & Dining, Top Local Schools, Credit Valley Hospital, Quick Hwy Access & More! One Parking & Locker. **** EXTRAS **** 24Hr Concierge, Guest Suites, Games Room, Children's Playground. Den Can Fit A Twin Bed (id:54154)



MLS®, REALTOR®, and the associated logos are trademarks of The Canadian Real Estate Association

Data Provided by: Toronto Regional Real Estate Board

Last Modified: 15/04/2024 05:30:54 PM

Listing Office:MEHOME REALTY (ONTARIO) INC.