

# \$597,500 - #501 -36 ELM DR

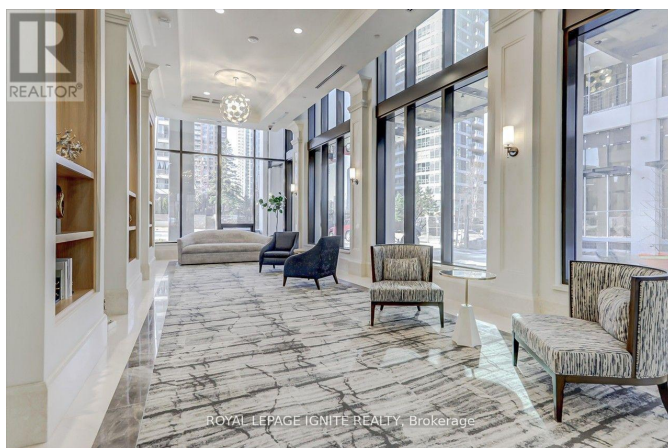
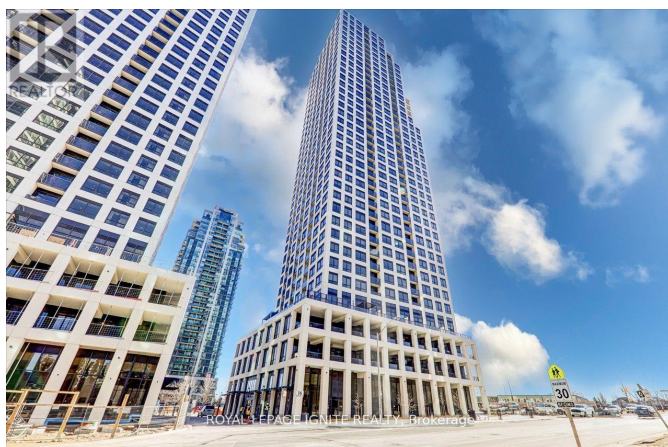
## Listing ID: W8235570

**\$597,500**

1 Bedrooms, 1 Bathrooms Single Family

#501 -36 ELM DR, Mississauga, Ontario,  
L5B0N3

Elevate your lifestyle with Edge Tower 1, a sophisticated condo in the heart of Mississauga. This 1 bed, 1 bath residence boasts an open-concept kitchen with modern appliances and the added convenience of an underground parking space. Immerse yourself in a community within walking distance of Square One Shopping Centre and City Hall, and anticipate seamless transit with the upcoming LRT. Indulge in the luxury of on-site amenities, including a state-of-the-art fitness centre, rejuvenating yoga studio, exclusive movie theatre, dynamic billiards/game room, vibrant party room, and a relaxing WiFi lounge. Unwind on the outdoor terrace and relish the urban panorama. Don't miss out on this exceptional opportunity to experience contemporary living at its finest, where convenience meets luxury in the thriving heart of Mississauga. (id:54154)



MLS®, REALTOR®, and the associated logos are trademarks of The Canadian Real Estate Association

Data Provided by: Toronto Regional Real Estate Board

Last Modified: 15/04/2024 03:33:40 PM

Listing Office:ROYAL LEPAGE IGNITE REALTY