

# \$2800.00 / Monthly - #2301 -3985 GRAND PARK DR

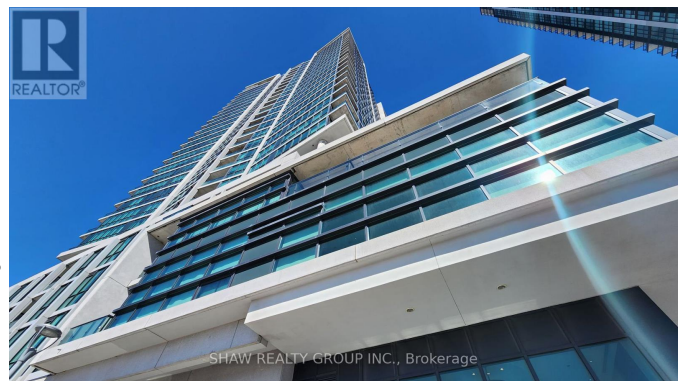
## Listing ID: W8221690

**\$2800.00 / Monthly**

2 Bedrooms, 2 Bathrooms Single Family

#2301 -3985 GRAND PARK DR,  
Mississauga, Ontario, L5B0H8

Welcome to Grand Park Drive condos developed by Pinnacle International in 2014. Conveniently located near the core of Mississauga, Square One, public transit, Sheridan College and tons of restaurants and entertainment. Residents of this condo can enjoy a Concierge, Guest Suites, Party and Meeting Rooms as well as a Rooftop patio, Indoor Pool and Gym, Sauna and Yoga Room. These units are modern, well lit and rooms are generous in size. Kitchen has lots of storage space for those who love to cook or entertain. Second parking spot is available at an additional charge for families with a second vehicle. If you are looking to live in the heart of the city, book your private showing today. Second parking spot is \$100 (id:54154)



MLS®, REALTOR®, and the associated logos are trademarks of The Canadian Real Estate Association

Data Provided by: Toronto Regional Real Estate Board

Last Modified: 24/04/2024 05:27:17 PM

Listing Office: SHAW REALTY GROUP INC.