

\$3000.00 / Monthly - #LPH4 -510 CURRAN PL

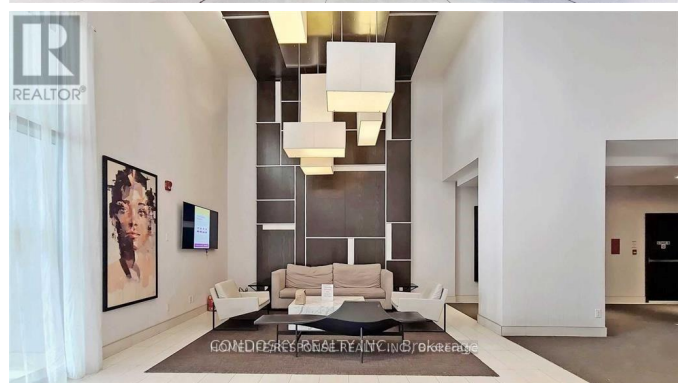
Listing ID: W8217402

\$3000.00 / Monthly

2 Bedrooms, 2 Bathrooms Single Family

#LPH4 -510 CURRAN PL, Mississauga,
Ontario, L5B0J8

Absolutely gorgeous lower penthouse with panoramic view. Hardwood floors throughout the apartment. Quartz Counter tops, open concept, floor to ceiling windows, 10 foot high ceilings and much more. Two full bathrooms, good size bedrooms. Freshly painted, just move in and enjoy the building amenities and the panoramic view. Walking distance to Square One and YMCA. (id:54154)



MLS®, REALTOR®, and the associated logos are trademarks of The Canadian Real Estate Association

Data Provided by: Toronto Regional Real Estate Board

Last Modified: 09/04/2024 03:28:15 PM

Listing Office:HOMELIFE/RESPONSE REALTY INC.