

# \$3000.00 / Monthly - #1008 -285 ENFIELD PL

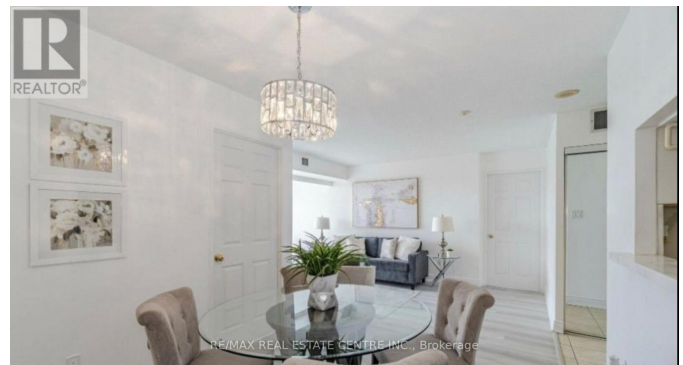
## Listing ID: W8215842

**\$3000.00 / Monthly**

3 Bedrooms, 2 Bathrooms Single Family

#1008 -285 ENFIELD PL, Mississauga,  
Ontario, L5B3Y6

Prime Location. In the Heart of Downtown Mississauga! Across from Square One Shopping Centre. Spectacular 2 bedroom Plus Solarium Unit With Gorgeous Kariya Park and City Views. Sun Filled Unit. Beautiful Modern Open Concept Kitchen, Quartz Countertops! Newly Painted, new premium floors. Large Master bedroom with Walk-in Closet. Building With Lots Of Amenities: Fitness, Party Room. Squash & Pool Table, Swimming Pool, Sauna, 24 hrs Concierge. close to YMCA, Library, Celebration square, Shopping and restaurants. Maintenance Fee Covers All Utilities Including Tv And Internet!!! \*Walking Distance from Square One mall & City Centre. \*IMAX Movie Theatres, Mi-Way. \*GO Transit bus stations, City Hall etc. \*Sheridan College & UTM. \*Living Arts. \*Mississauga City Hall. \*\*\*\* EXTRAS \*\*\*\* 1 Underground parking on p2 #236 & 1-Locker on p2 #465. No Smoking, No Pets Bldg. New comers welcome. (id:54154)



MLS®, REALTOR®, and the associated logos are trademarks of The Canadian Real Estate Association  
Data Provided by: Toronto Regional Real Estate Board  
Last Modified: 09/04/2024 11:27:29 AM  
Listing Office: RE/MAX REAL ESTATE CENTRE INC.