

\$599,900 - #PH12 -265 ENFIELD PL

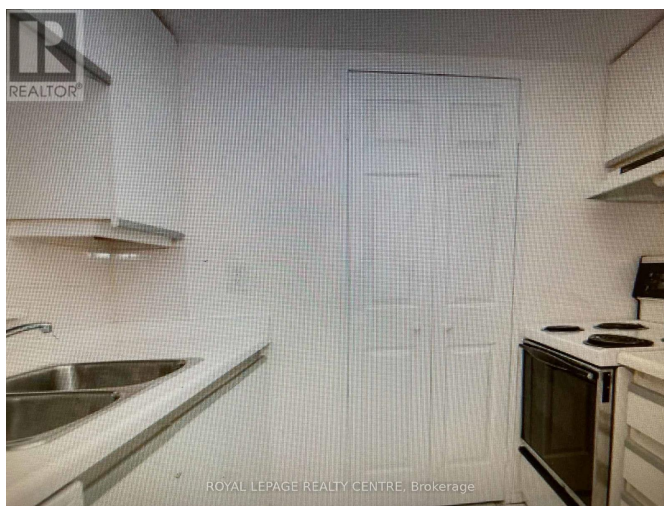
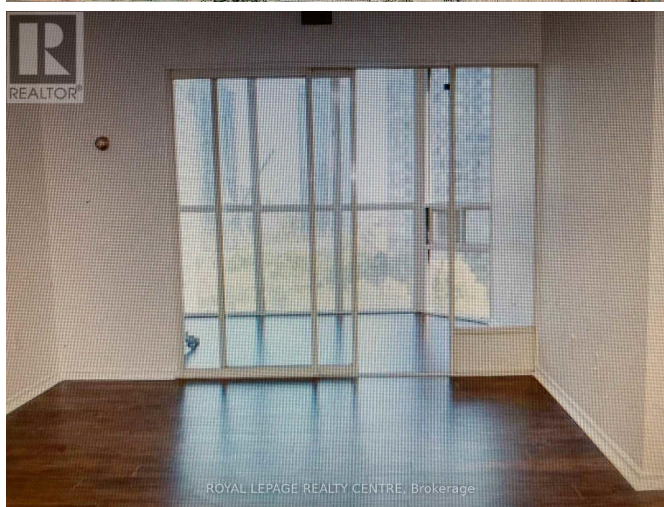
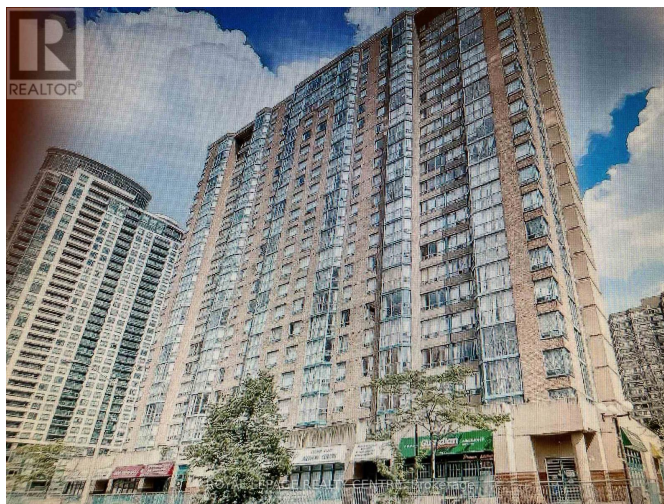
Listing ID: W8107542

\$599,900

3 Bedrooms, 2 Bathrooms Single Family

#PH12 -265 ENFIELD PL, Mississauga,
Ontario, L5B3Y7

Bright and Spacious South-Facing 2 Bed, 2
Bath Penthouse Unit. One Parking & One
Locker. 24 Hour Concierge, Walking
Distance to Square One, Public Transit,
Schools, Library, City Hall, Living Art
Centre and Easy Access to All Major Hwy's.
(id:54154)



MLS®, REALTOR®, and the associated logos are trademarks of The Canadian Real Estate Association

Data Provided by: Toronto Regional Real Estate Board

Last Modified: 10/04/2024 05:26:31 PM

Listing Office:ROYAL LEPAGE REALTY CENTRE