

# \$2295.00 / Monthly - #425 -220 MISSINNIHE WAY

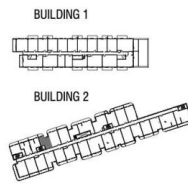
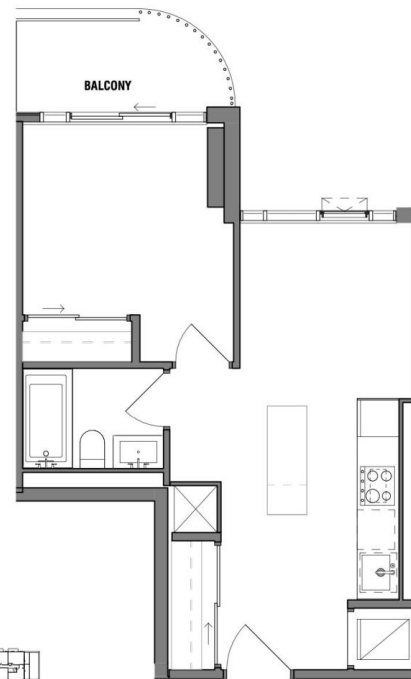
## Listing ID: W8094982

**\$2295.00 / Monthly**

1 Bedrooms, 1 Bathrooms Single Family

#425 -220 MISSINNIHE WAY,  
Mississauga, Ontario, L5H0A9

Experience living close to water/Lake Ontario, luxury resort style living in the heart of Port Credit, exceptional views, must see this brand new never lived in unit, bright one bedroom unit including parking and locker, Luxury washroom, balcony to enjoy the summer weather, gourmet style kitchen with quartz countertop, ceramic backsplash, plenty of cupboards, resort style amenities, close to highway, shopping & dining, waterfront trails, beach front access, minutes to GO train & public transit systems. Tenants to Pay all the utilities bills. \*\*\*\* EXTRAS \*\*\*\* 24 hour concierge, gym, EV charging stations, keyless entry, visitor parking, keyless door entry to the unit, gym/yoga (id:54154)



# \$2295.00 / Monthly - #425 -220 MISSINNIHE WAY

---



MLS®, REALTOR®, and the associated logos are trademarks of The Canadian Real Estate Association

Data Provided by: Toronto Regional Real Estate Board

Last Modified: 24/04/2024 11:30:26 AM

Listing Office:HOMELIFE/MIRACLE REALTY LTD