

\$2,017,990 - #1708 -21 PARK ST E

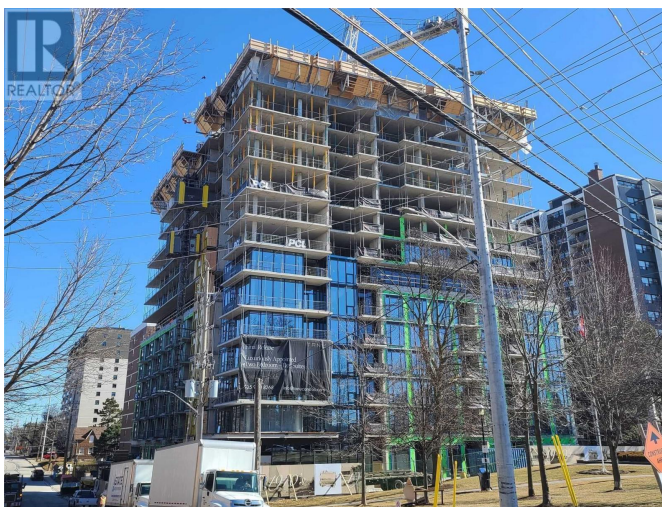
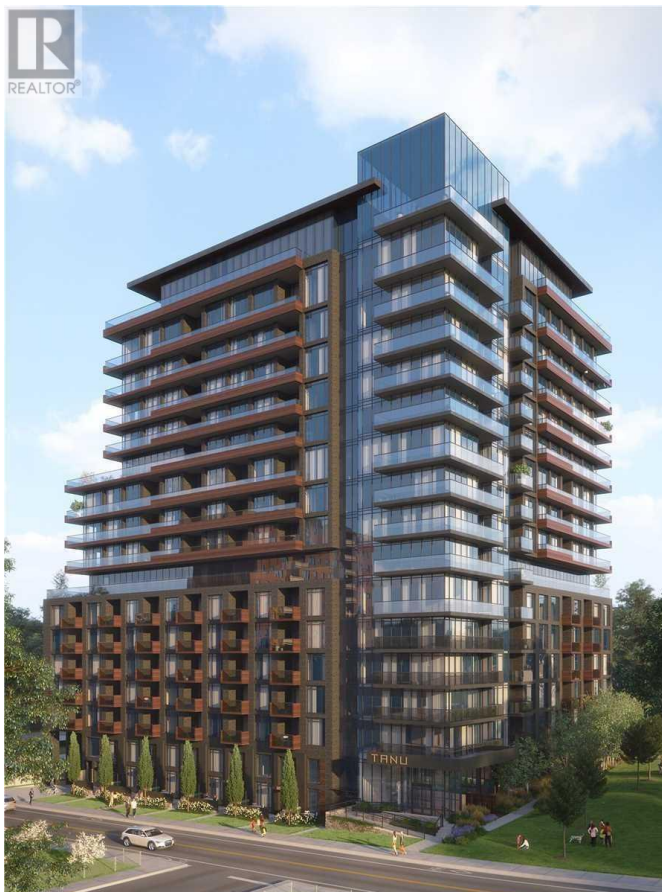
Listing ID: W5270363

\$2,017,990

3 Bedrooms, 3 Bathrooms Single Family

#1708 -21 PARK ST E, Mississauga,
Ontario, L5G1L7

Tanu-Brand New Luxury Building In The Heart Of Port Credit Village! Built By Edenshaw- Port Credit's Premium Developer. Lower Penthouse Corner Unit- 1705Sq' 2+Den, 3 Baths, Wrap-Around Balcony W/City Skyline & Lake Views. Exquisite Finishes Incl. 10Ft Ceilings, Eng Hrdwd Flrs. Kit. W/Waterfall Island, B/I European Apps, Stone Counters, Spa Ensuite W/Stand Alone Tub+Lrg Wlk-In Shower, Steps To Port Credit Go, Credit River, Lakefront, Schools- Exclusive Community**** EXTRAS **** 2Pk/2Storage, Smart Home Technology; Key-Less Entry, License Plate Recognition, In-Suite Security, 24/7 Concierge, Guest Suite, Gym/Yoga Rm, Movie Lounge, Billiards/Games Rm, Visitor Pkg, Outdoor Terrace, Car-Wash Pet Spa And Much More. (id:10113)



\$2,017,990 - #1708 -21 PARK ST E

Last Modified: 09/10/2021 11:10:36 AM

Listing Office:KELLER WILLIAMS REAL ESTATE ASSOCIATES, LAROSE TEAM