

\$425,000 - 625 SHORELINE Drive Unit# 13

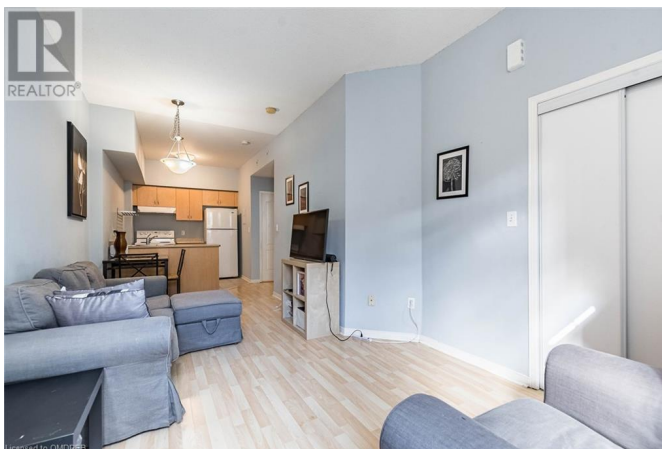
Listing ID: 40580814

\$425,000

1 Bedrooms, 1 Bathrooms, 560
Single Family

625 SHORELINE Drive Unit# 13,
Mississauga, Ontario, L5B4K5

Fantastic entry level Stacked townhouse with a modern feel, featuring 9 foot ceilings! Centrally located in Mississauga, steps from everything you need such as Cooksville go and Square one, all major highways and transportation as well as schools and shopping. This lovely unit has an open concept main area with a combined living and dining area. The kitchen is also open with a breakfast bar area, and plenty of cabinetry. The bedroom is large, featuring a double closet and perfect area for a home office nook with a large window. Nice 4 piece bathroom, 1 car parking on the surface. This complex is wonderful with relatively low maintenance fees compared to other units in town! The tenant is leaving June 1st, vacate possession possible after that date! Shows well! (id:54154)



MLS®, REALTOR®, and the associated logos are trademarks of The Canadian Real Estate Association

Data Provided by: The Oakville, Milton & District Real Estate Board

Last Modified: 01/05/2024 10:44:07 AM

Listing Office:RE/MAX Real Estate Centre Inc, Brokerage