

\$1,499,000 - 1055 SOUTHDOWN Road Unit# PH10

Listing ID: 40538661

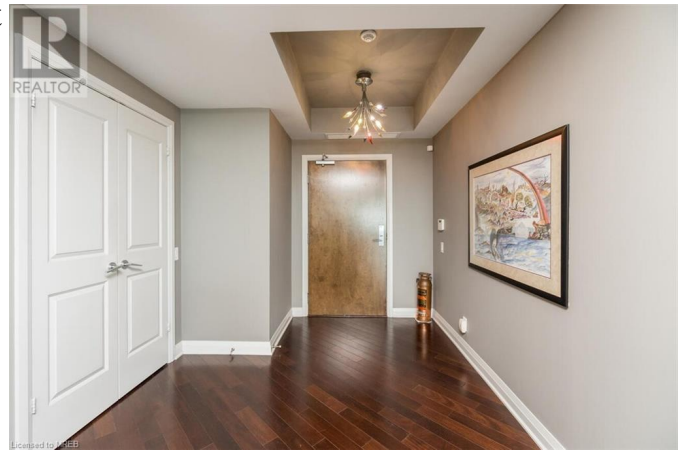
\$1,499,000

2 Bedrooms, 3 Bathrooms, 2433

Single Family

1055 SOUTHDOWN Road Unit# PH10,
Mississauga, Ontario, L5J0A3

Stunning penthouse offered for the very first time! This immaculate suite offers over 2400 square feet of living space. Over sized living room with Brazilian hardwood, gas fire place, built-in speakers and surrounding floor to ceiling windows. Chef's kitchen boasting Hickory cabinetry, Large island, indoor grill and gas stove with warming drawer. Luxurious Master w/ 5 piece en suite and walk-in closet. Gorgeous views of the lake and escarpment from 2 private balconies. Fully accommodates wheelchair accessibility. Large custom locker and 2 conveniently located side by side parking spots. This suite must be seen!! (id:54154)



MLS®, REALTOR®, and the associated logos are trademarks of The Canadian Real Estate Association

Data Provided by: Mississauga Real Estate Board

Last Modified: 20/04/2024 03:17:15 PM

Listing Office: REXIG REALTY INVESTMENT GROUP LTD